



FORTIS BC

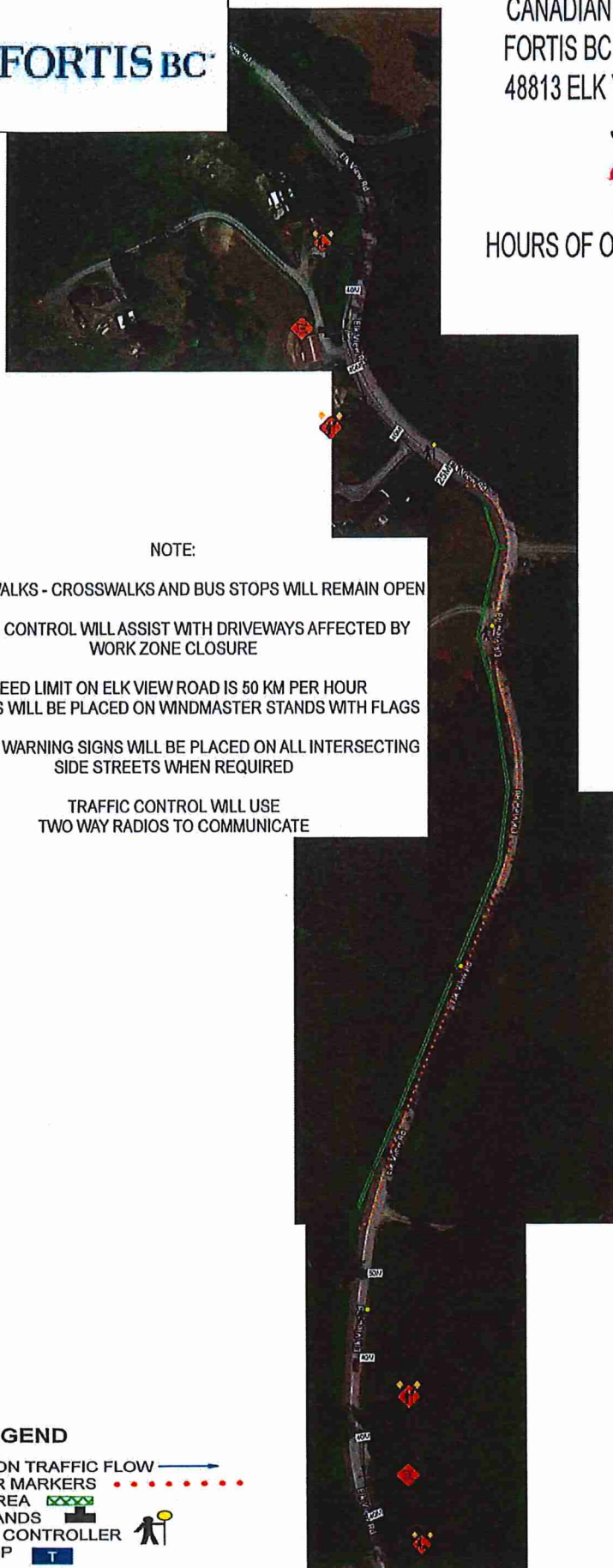
CANADIAN UTILITY CONSTRUCTION
FORTIS BC GAS MAIN INSTALLATION
48813 ELK VIEW ROAD, CHILLIWACK
JOB# 31066128



~~Oct~~ Apr. 2020

~~JUNE 2019~~

HOURS OF OPERATION 7:00AM - 5:00PM



NOTE:

ALL SIDEWALKS - CROSSWALKS AND BUS STOPS WILL REMAIN OPEN

TRAFFIC CONTROL WILL ASSIST WITH DRIVEWAYS AFFECTED BY
WORK ZONE CLOSURE

SPEED LIMIT ON ELK VIEW ROAD IS 50 KM PER HOUR
ALL SIGNS WILL BE PLACED ON WINDMASTER STANDS WITH FLAGS

ADVANCE WARNING SIGNS WILL BE PLACED ON ALL INTERSECTING
SIDE STREETS WHEN REQUIRED

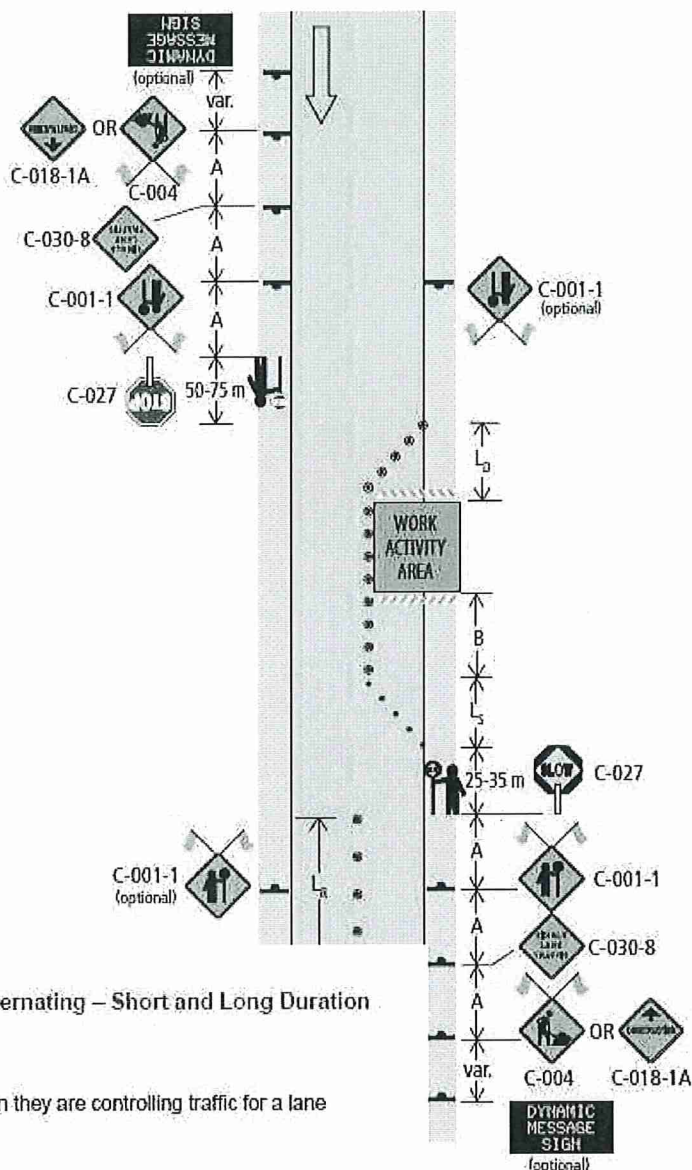
TRAFFIC CONTROL WILL USE
TWO WAY RADIOS TO COMMUNICATE

✓
AH

LEGEND

DIRECTION TRAFFIC FLOW →
TUBULAR MARKERS
WORK AREA [X]
SIGN STANDS [S]
TRAFFIC CONTROLLER [P]
BUS STOP [T]

www.invarion.com



Purpose:

Standard:

- When used at night, the TCP station shall be illuminated with overhead lighting.
- Barricades are required at each end of the work activity area for long-duration work.

Guidance:

- The distance between the TCP and the Traffic Control Person Ahead C-001-1 sign should not exceed 150 metres.
- Where Crew Working – Maximum Speed C-002-2 signs establish a Temporary Speed Zone, the C-002-2 should be placed upstream of the C-004 or C-018-1.
 - Thank You Resume Speed C-086-1 signs should be placed across from the Crew Working – Maximum Speed C-002-2 signs in the opposing lanes.

Options:

- An additional Traffic Control Person Ahead C-001-1 sign may be added to the far side of the road to provide queued drivers with increased awareness of the TCP position.
- The Flagger Ahead C-001-2 sign or Prepare to Stop C-029 sign may be used for additional advance warning where TCPs are stopping traffic.
- A Prepare to Stop C-029 sign may replace the Single Lane Traffic C-030-8 sign for other applications that require traffic to stop (e.g., equipment crossing road).
- Run-in delineation, L_R may be omitted during period where queues are low, permitting the full release of the queue in each direction.